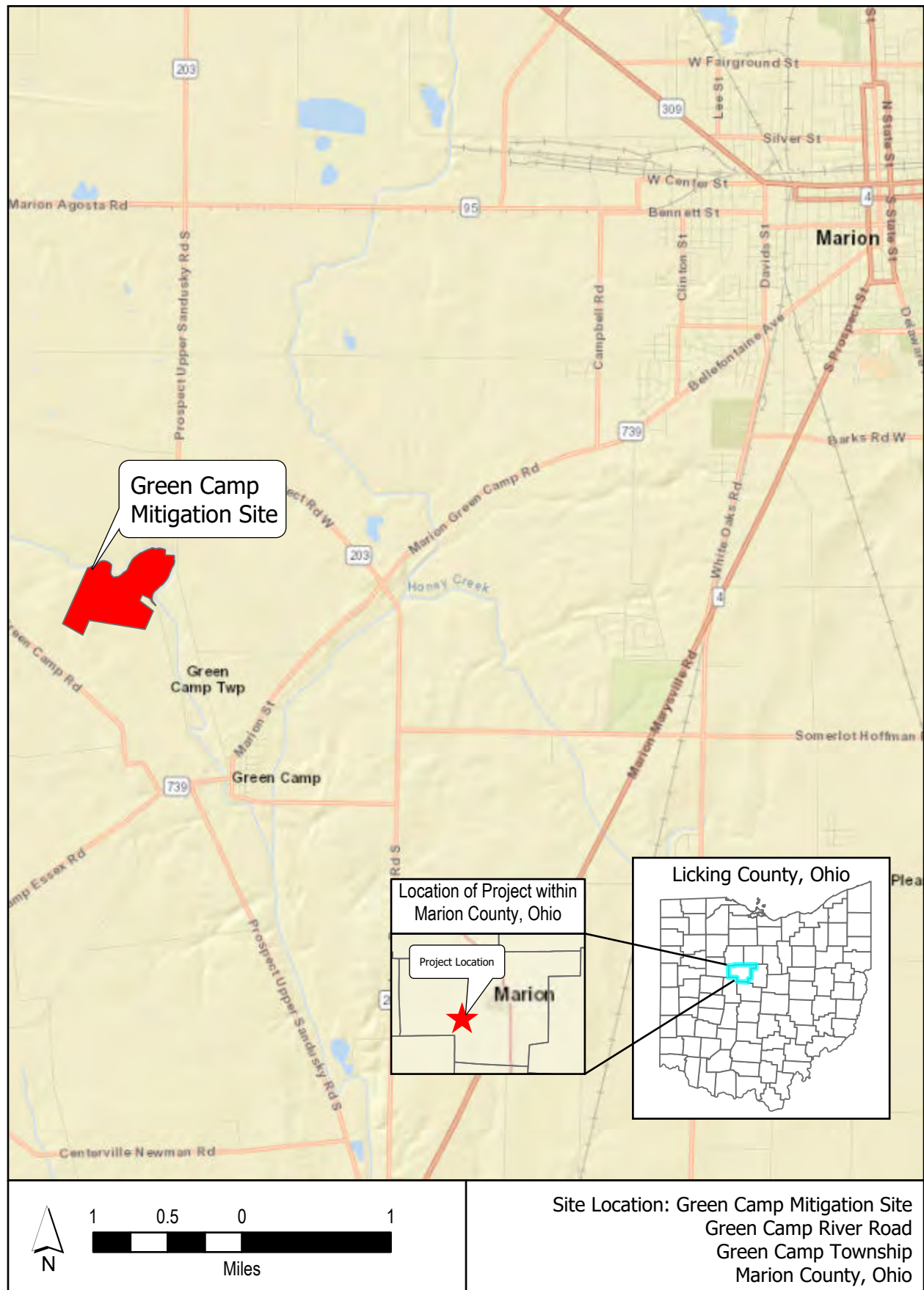


Location of Study Area on Highway Map



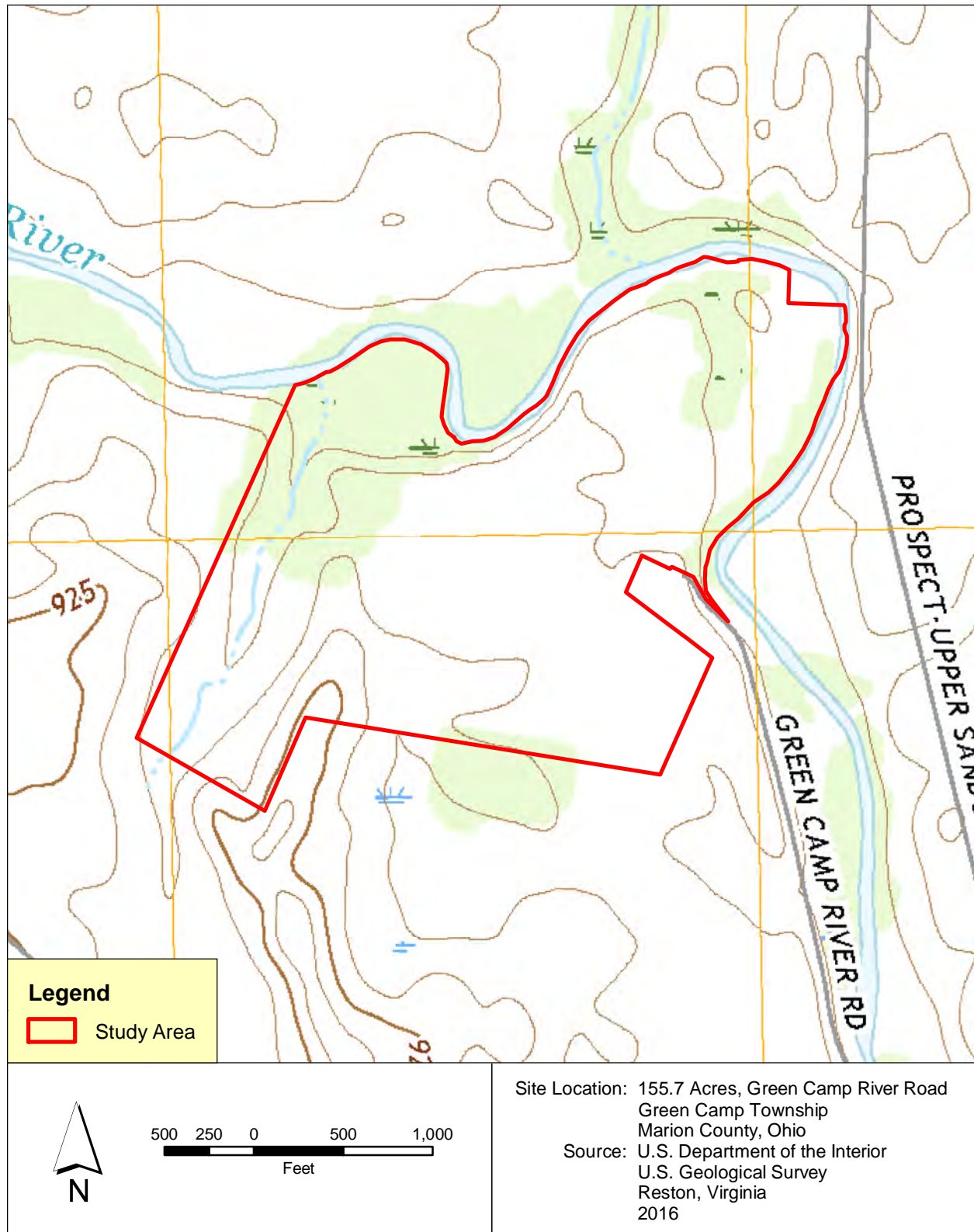
Enclosure 2

Location of Study Area on Aerial Photograph



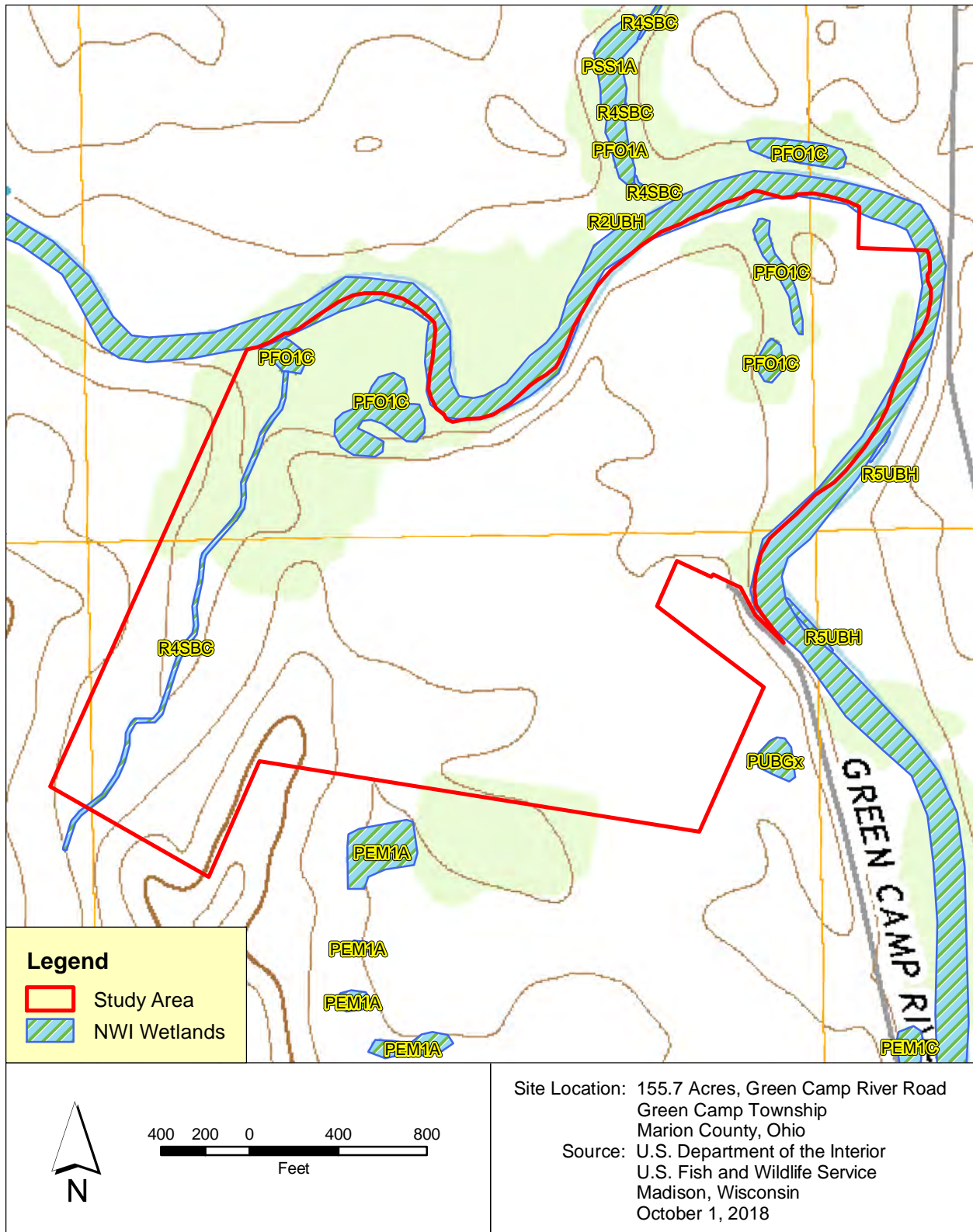
Enclosure 3

**Location of Study Area on
USGS 7.5-Minute Topographic Map
(Marion West Quadrangle)**

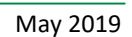


Enclosure 4

**Location of Study Area on
National Wetlands Inventory Map
(Marion West Quadrangle)**



Location of Study Area on Marion County Soil Survey Map



Appendix A **Enclosure 6**
Water Resources Map

Prepared for

Stream + Wetlands Foundation

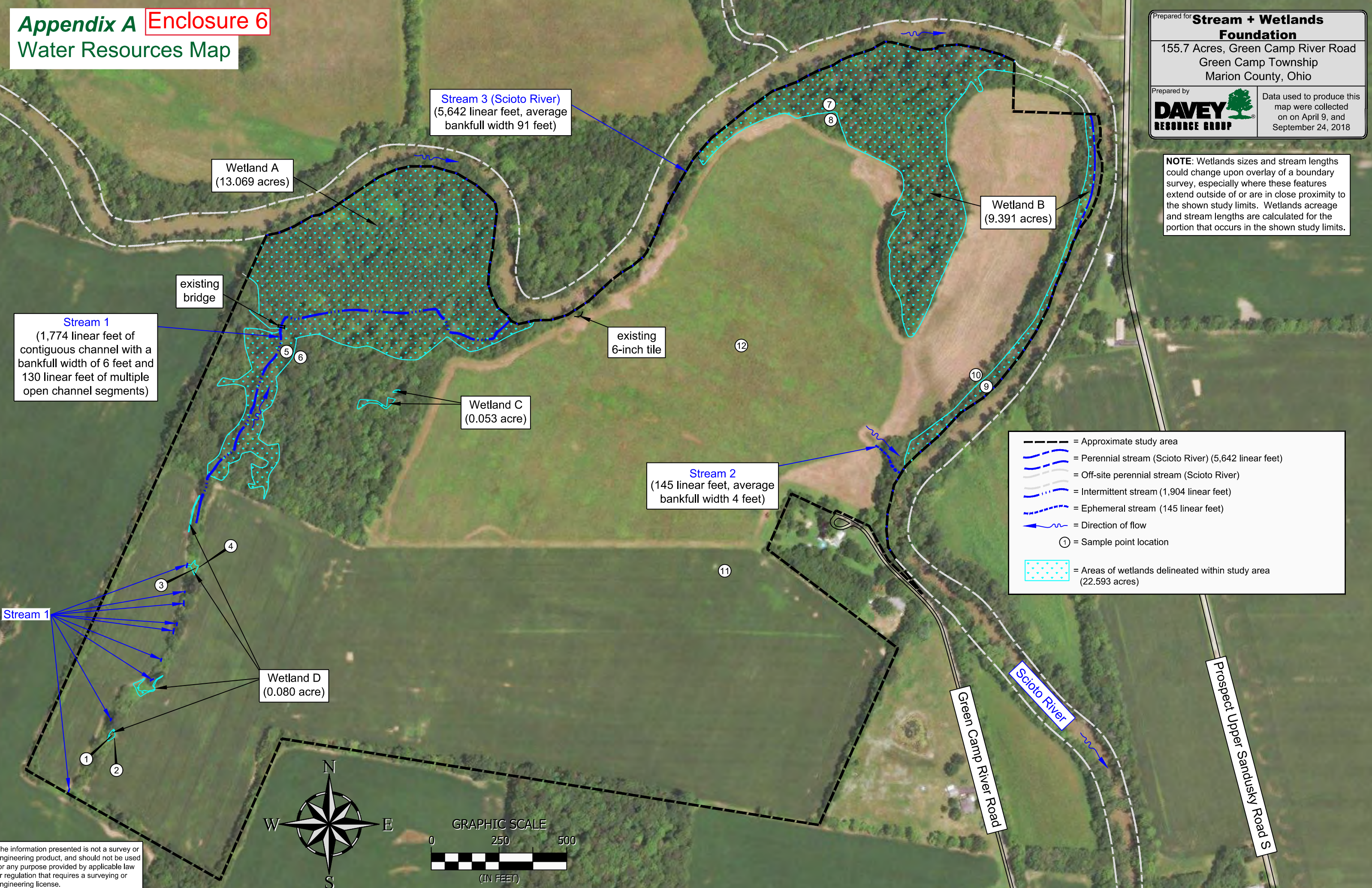
155.7 Acres, Green Camp River Road
Green Camp Township
Marion County, Ohio

Prepared by

DAVEY
RESOURCE GROUP

Data used to produce this map were collected on on April 9, and September 24, 2018

NOTE: Wetlands sizes and stream lengths could change upon overlay of a boundary survey, especially where these features extend outside of or are in close proximity to the shown study limits. Wetlands acreage and stream lengths are calculated for the portion that occurs in the shown study limits.



- = Approximate study area
- = Perennial stream (Scioto River) (5,642 linear feet)
- - - = Off-site perennial stream (Scioto River)
- · - · = Intermittent stream (1,904 linear feet)
- · - · - · = Ephemeral stream (145 linear feet)
- = Direction of flow
- ① = Sample point location
- · · = Areas of wetlands delineated within study area (22.593 acres)

Stream 1

Stream 3 (Scioto River)
(5,642 linear feet, average
bankfull width 91 feet)

Wetland A
(13.069 acres)

Wetland B
(9.391 acres)

existing
bridge

Stream 1
(1,774 linear feet of
contiguous channel with a
bankfull width of 6 feet and
130 linear feet of multiple
open channel segments)

existing
6-inch tile

Wetland C
(0.053 acre)

Stream 2
(145 linear feet, average
bankfull width 4 feet)

Wetland D
(0.080 acre)

Green Camp River Road

Scioto River

Prospect Upper Sandusky Road S



The information presented is not a survey or engineering product, and should not be used for any purpose provided by applicable law or regulation that requires a surveying or engineering license.

Enclosure 7

Scioto River
Preservation

Stream 1
Preservation

Stream 1
Restoration

- RE-ESTABLISHED NON-FORESTED WETLANDS
- RE-ESTABLISHED FORESTED WETLANDS
- RE-ESTABLISHED FORESTED WETLANDS (WITHIN PERIMETER BUFFER)
- RE-ESTABLISHED FORESTED WETLANDS/UPLANDS MOSAIC
- RE-ESTABLISHED FORESTED WETLANDS/UPLANDS MOSAIC (WITHIN PERIMETER BUFFER)
- RE-ESTABLISHED FORESTED UPLANDS <50M FROM WETLANDS
- RE-ESTABLISHED FORESTED UPLANDS <50M FROM WETLANDS (WITHIN PERIMETER BUFFER)
- RE-ESTABLISHED FORESTED UPLANDS >50M FROM WETLANDS
- RE-ESTABLISHED FORESTED UPLANDS >50M FROM WETLANDS (WITHIN PERIMETER BUFFER)
- PRESERVED FORESTED WETLANDS
- PRESERVED FORESTED WETLANDS (WITHIN PERIMETER BUFFER)
- PRESERVED RIPARIAN BUFFER
- PRESERVED UPLAND INCLUSIONS
- PRESERVED UPLAND INCLUSIONS (WITHIN PERIMETER BUFFER)
- RE-ESTABLISHED RIARIAN BUFFER